

# Meet DINO lightweight MEWPs

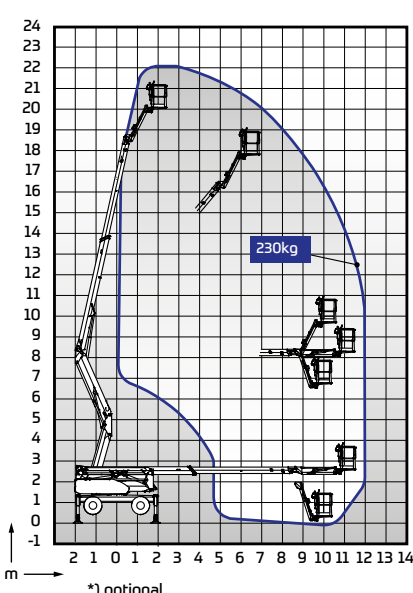
Higher. Lighter. Smarter.

## DINOLIFT

UP TO THE JOB



### DINO 220RXT

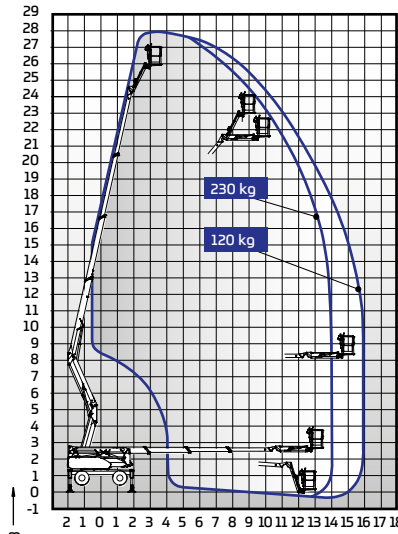


Technical data	220RXT
Max. working height	22.00 m
Max. platform height	20.00 m
Max. outreach	12.00 m
Support width	4,6 / 4,2 m
Lifting capacity	230 kg / 250 kg*
Basket size	0,7 x 1,3 m / 0,75 x 1,6 m*
Boom rotation	continuous
Basket rotation	180°
Boom control	CAN-BUS, proport.
Jib	1,6 m / 140°
Transport length	6,35 m
Transport width	2,05 m
Transport height	2,37 m
Approach / departure angles	33,4°
Ground clearance	0,33 m
Four wheel drive	std
Steering, 2WS / 4WS / Crab	std
AC socket in the basket x 2	std
Automatic levelling	std
Gradeability	40 %
Drive speed	10,0 / 3,0 km/h



Technical data	220RXT
Power source	Kubota D1105 EU Stage V, EPA/CARD Tier 4 Final
Weight kg	4700
Power kW (cont./peak)	18,5 kW
Electric motor 110/230VAC	Option, only for boom movements

### DINO 280RXT 280RXT E 280RXT E Long Range

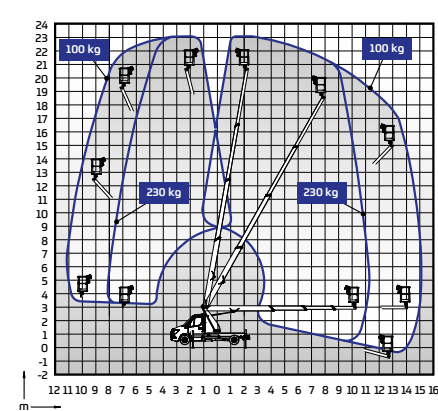


Technical data	280RXT / 280RXT E 280RXT E Long Range
Max. working height	28.00 m
Max. platform height	26.00 m
Max. outreach	16.00 m
Support width	4,6 / 4,2 m
Lifting capacity	230 kg / 250 kg*
Basket size	0,7 x 1,3 m / 0,75 x 1,6 m*
Boom rotation	continuous
Basket rotation	180°
Boom control	CAN-BUS, proport.
Jib	1,6 m / 140°
Transport length	5,82 m
Transport width	2,05 m
Transport height	2,37 m
Approach / departure angles	33,4°
Ground clearance	0,33 m
Four wheel drive	std
Steering, 2WS / 4WS / Crab	std**
AC socket in the basket x 2	std
Automatic levelling	std**
Gradeability	40 %**
Drive speed	10,0 / 3,0 km/h



Technical data	280RXT	280RXT E AGM	280RXT E Lithium	280RXT E Long Range
Power source	Kubota D1105 EU Stage V, EPA/CARD Tier 4 Final	AGM battery	Lithium battery	AGM battery
Weight kg	4860	5100	4860	5400
Power kW (cont./peak)	18,5 kW	15 / 20 kW	15 / 20 kW	15 / 20 kW
Battery capacity	-	250 Ah	288 Ah	580 Ah
Battery heating	-	-	Std	-
Charger aggregate	-	Option, petrol	Option, petrol	-
Electric motor 110/230VAC	Option, only on RXT, only for boom movements	-	-	-

\* optional  
\*\* Not at 280RXT E Long Range

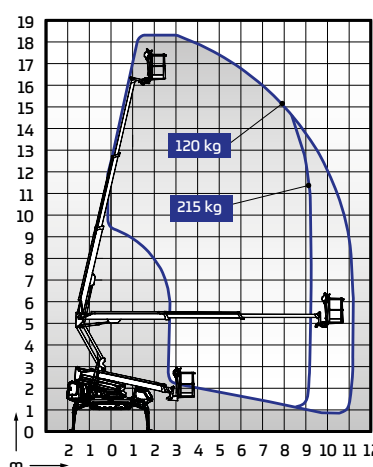


Technical data	230VT	230VTH*
Max. working height	23.00 m	23.00 m
Max. platform height	21.00 m	21.00 m
Max. lateral outreach	15.1 m / 100 kg 11.3 m / 230 kg	15.1 m / 100 kg 11.3 m / 230 kg
Lifting capacity	230 kg	230 kg
Basket size	0,7 x 1,4 m	0,7 x 1,4 m
Boom rotation	±355°	±355°
Basket rotation	180°	180°
Vehicle length	7,75 m	7,75 m
Max. transport width	2,43 m	2,43 m
Vehicle width	2,26 m	2,26 m
Vehicle height	2,96 m	2,96 m
Total vehicle weight	3400 kg	3500 kg
Departure angle	9°	9°
Support width		
- longitudinal	3,9 m	3,9 m
- wide jacking	3,2 m	3,2 m
- narrow jacking	2,0 m	2,0 m
- one-sided jacking	2,6 m	2,6 m
Boom control	CAN-BUS, proport.	CAN-BUS, proport.
Automatic levelling	std	std
Home function	std	std
Memory function	std	std
Batteries	-	5 kW / 105 Ah / 48 V
Diesel or DC operation	diesel only	std

### DINO 230VT 230VTH

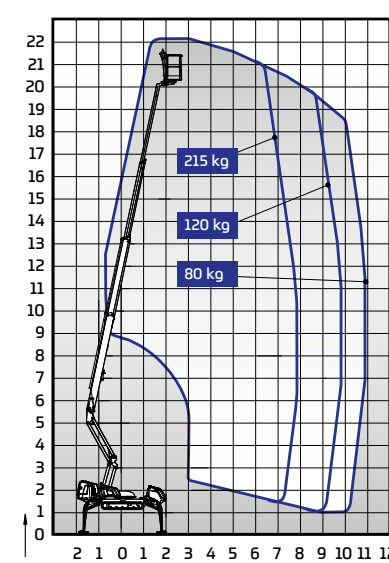


\* available with MB Sprinter Basic only



Technical data	185XTC II
Max. working height	18.50 m
Max. platform height	16.50 m
Max. outreach	11.20 m
Support width	3,54 / 3,95 m
Lifting capacity	215 kg
Basket size	0,7 x 1,3 m
Boom rotation	continuous
Basket rotation	180°
Boom control	proportional
Transport length	5,93 m
Transport width	1,40 / 1,18 m
Transport height	1,98 m
Weight	2860 kg
AC socket in the basket x 2	std
Diesel engine Kubota 17.3 kW	std
Length of tracks	1,93 m
Gradeability	43 %
Max. levelling inclination	16°
Drive speed	1,4 / 2,4 km/h
Automatic levelling	std
Radio control	option
Electric motor 110/230VAC	option

### DINO 185XTC II



Technical data	220XTC II
Max. working height	22.10 m
Max. platform height	20.10 m
Max. outreach	11.00 m
Support width	3,54 / 3,95 m
Lifting capacity	215 kg
Basket size	0,7 x 1,3 m
Boom rotation	continuous
Basket rotation	180°
Boom control	proportional
Transport length	6,30 m
Transport width	1,40 / 1,18 m
Transport height	1,98 m
Weight	3060 kg
AC socket in the basket x 2	std
Diesel engine Kubota 17.3 kW	std
Length of tracks	1,93 m
Gradeability	43 %
Max. levelling inclination	16°
Drive speed	1,4 / 2,4 km/h
Automatic levelling	std
Radio control	option
Electric motor 110/230VAC	option

### DINO 220XTC II



### DT 3500L trailer

#### 100% up to the job

- Weight 410 kg
- Length 6.20 m
- Width 2.07 m
- Payload 3050 kg

### DT 3500L



DINO lightweight MEWPs are known for their quality, reliability and safety. We design and build every DINO at our factory in Finland.

We take no shortcuts. We make no compromises. We make machines that help you work at height with maximum confidence. In all conditions. In all terrains.

Get in touch with us to build your own DINO.

# DINOLIFT

UP TO THE JOB

Dinolift Oy | Raikkolantie 145 • FI-32210 LOIMAA, FINLAND  
Tel: +358 (0)20 1772 400 • E-mail: info@dinolift.com

[www.dinolift.com](http://www.dinolift.com)

Technical specifications are subject to change without prior notice.

©Dinolift Oy | 24.3.2025



# Meet

## DINO lightweight MEWPs

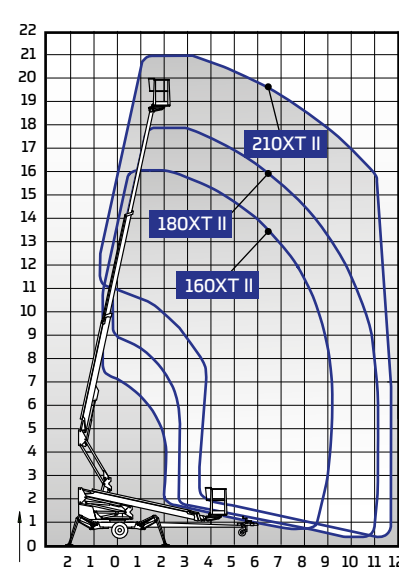
Reach high. Travel light.

# DINOLift

UP TO THE JOB



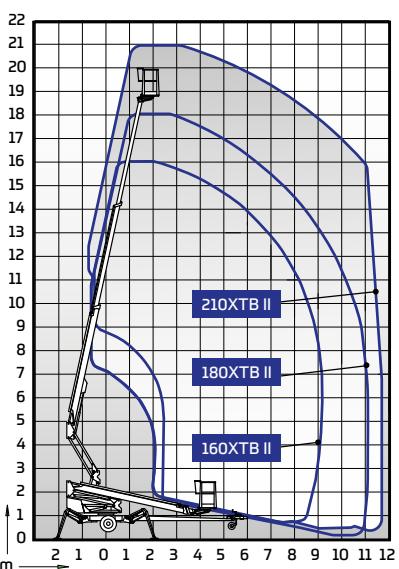
### DINO 160XT II | 180XT II | 210XT II



Technical data	160XT II	180XT II	210XT II
Max. working height	16.00 m	18.00 m	21.00 m
Max. platform height	14.00 m	16.00 m	19.00 m
Max. outreach	9.10 m	11.20 m	11.70 m
Support width	3.8 / 4.2 m	3.9 / 4.3 m	3.9 / 4.3 m
Lifting capacity	215 kg	215 kg	215 kg
Basket size	0.7 x 1.3 m	0.7 x 1.3 m	0.7 x 1.3 m
Boom rotation	continuous	continuous	continuous
Basket rotation	180°	180°	180°
Boom control	proportional	proportional	proportional
Transport length	6.15 m	6.66 m	7.92 m
Transport width	1.80 m	1.95 m	1.95 m
Transport height	2.30 m	2.30 m	2.33 m
Weight	1990 kg	2315 kg	2475 kg
Driving system	std	std	std
AC socket in the basket x 2	std	std	std
Electric motor 110/230VAC	std	std	std
Petrol engine	option	option	option
Diesel engine	option	option	option
Gradeability	25 %	25 %	25 %



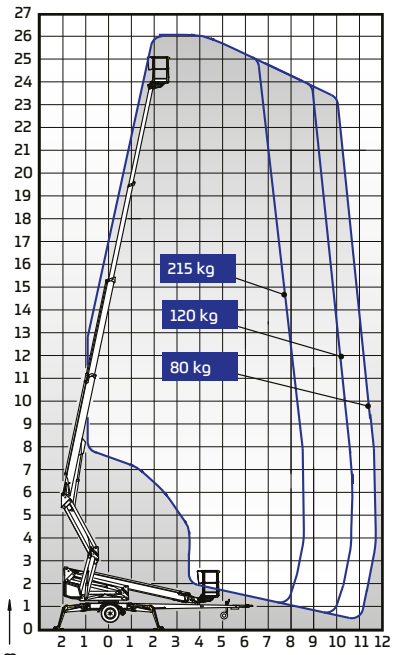
### DINO 160XTB II | 180XTB II | 210XTB II



Technical data	160XTB II	180XTB II	210XTB II
Max. working height	16.00 m	18.00 m	21.00 m
Max. platform height	14.00 m	16.00 m	19.00 m
Max. outreach	9.10 m	11.20 m	11.70 m
Support width	3.8 / 4.2 m	3.9 / 4.3 m	3.9 / 4.3 m
Lifting capacity	215 kg	215 kg	215 kg
Basket size	0.7 x 1.3 m	0.7 x 1.3 m	0.7 x 1.3 m
Boom rotation	continuous	continuous	continuous
Basket rotation	180°	180°	180°
Boom control	proportional	proportional	proportional
Transport length	6.15 m	6.66 m	7.92 m
Transport width	1.80 m	1.95 m	1.95 m
Transport height	2.31 m	2.30 m	2.33 m
Weight	2195 kg	2380 kg	2610 kg
Driving system	std	std	std
AC socket in the basket x 2	std	std	std
Batteries 235 Ah	std	std	std
DC Motor	std	std	std
Gradeability	25 %	25 %	25 %



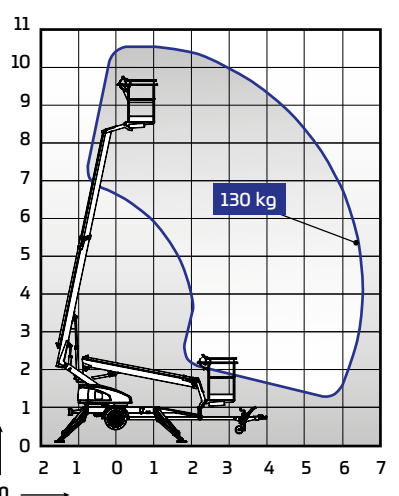
### DINO 260XTD



Technical data	260XTD
Max. working height	26.00 m
Max. platform height	24.00 m
Max. outreach	11.70 m
Support width	4.4 / 4.85 m
Lifting capacity	215 kg
Basket size	0.7 x 1.3 m
Boom rotation	continuous
Basket rotation	90°
Boom control	proportional
Transport length	8.21 m
Transport width	2.05 m
Transport height	2.43 m
Weight	3495 kg
Driving system	std
AC socket in the basket x 2	std
Electric motor 110/230VAC	std
Petrol engine	std
Diesel engine	option
Gradeability	25 %
Drive from the basket	std



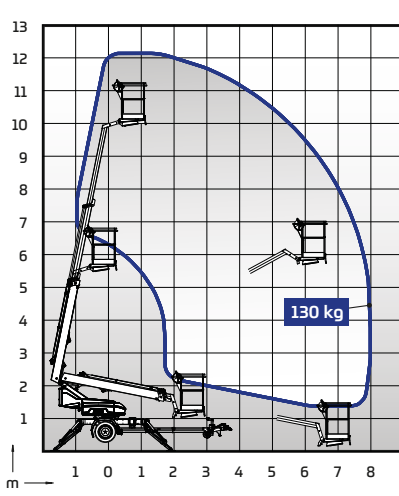
### DINO 105TL



Technical data	105TL
Max. working height	10.50 m
Max. platform height	8.50 m
Max. outreach	6.50 m
Support width	3.25 / 3.50 m
Lifting capacity	130 kg
Basket size	0.75 x 0.80 m
Boom rotation	+/- 355°
Boom control	2-speed
Transport length	5.45 m
Transport width	1.49 m
Transport height	1.98 m
Weight	955 kg
Driving system	option
AC socket in the basket x 2	std
Electric motor 110/230VAC	std



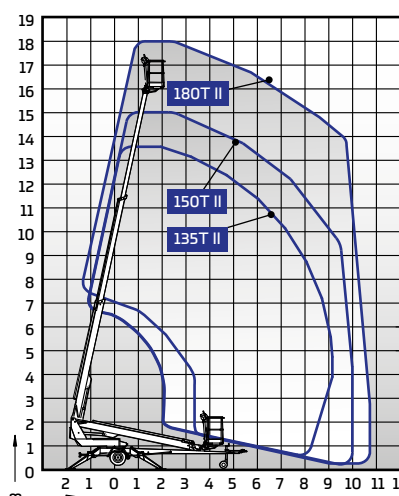
### DINO 120TL | 120TLB



Technical data	120TL	120TLB
Max. working height	12.00 m	12.00 m
Max. platform height	10.00 m	10.00 m
Max. outreach	8,1 m	8,1 m
Support width	3,8 m	3,8 m
Lifting capacity	130 kg	130 kg
Basket size	0,75 x 0,8 m	0,75 x 0,8 m
Boom rotation	±355°	±355°
Boom control	2-speed on/off	2-speed on/off
Transport length	5,3 m	5,3 m
Transport width	1,53 m	1,53 m
Transport height	2,03 m	2,03 m
Weight	1263 kg	1263 kg
Driving system	std	std
AC socket in the basket x 2	std	std
Electric motor 110/230VAC	2,2 kW 230VAC	2,0 kW 24VDC
Batteries 2 x 12 V / 150Ah	-	std
Narrow axle width <100cm	option	option



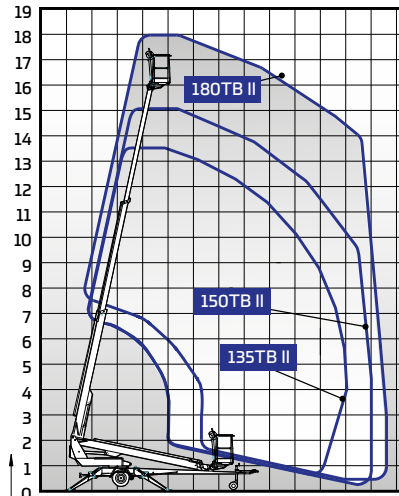
### DINO 135T II | 150T II | 180T II



Technical data	135T II	150T II	180T II
Max. working height	13.50 m	15.00 m	18.00 m
Max. platform height	11.50 m	13.00 m	16.00 m
Max. outreach	9.10 m	10.00 m	10.70 m
Support width	3.8 / 4.2 m	3.8 / 4.2 m	3.8 / 4.2 m
Lifting capacity	215 kg	215 kg	215 kg
Basket size	0.7 x 1.3 m	0.7 x 1.3 m	0.7 x 1.3 m
Boom rotation	continuous	continuous	continuous
Basket rotation	90°	90°	90°
Boom control	proportional	proportional	proportional
Transport length	6.09 m	6.66 m	7.68 m
Transport width	1.79 m	1.79 m	1.79 m
Transport height	2.16 m	2.12 m	2.08 m
Weight	1635 kg	1675 kg	1840 kg
Driving system	std	std	std
AC socket in the basket x 2	std	std	std
Electric motor 110/230VAC	std	std	std
Petrol engine	option	option	option
Gradeability	25 %	25 %	25 %



### DINO 135TB II | 150TB II | 180TB II



Technical data	135TB II	150TB II	180TB II
Max. working height	13.50 m	15.00 m	18.00 m
Max. platform height	11.50 m	13.00 m	16.00 m
Max. outreach	9.10 m	10.00 m	10.70 m
Support width	3.8 / 4.2 m	3.8 / 4.2 m	3.8 / 4.2 m
Lifting capacity	215 kg	215 kg	215 kg
Basket size	0.7 x 1.3 m	0.7 x 1.3 m	0.7 x 1.3 m
Boom rotation	continuous	continuous	continuous
Basket rotation	90°	90°	90°
Boom control	proportional	proportional	proportional
Transport length	6.09 m	6.66 m	7.68 m
Transport width	1.79 m	1.79 m	1.79 m
Transport height	2.16 m	2.12 m	2.08 m
Weight	1765 kg	1835 kg	1970 kg
Driving system	std	std	std
AC socket in the basket x 2	std	std	std
Batteries 235 Ah	std	std	std
DC Motor	std	std	std
Gradeability	25 %	25 %	25 %

