

Meet

DINO 280RXTE Long Range

All electric DINO® Lightweight 4x4

Standard features in DINO 280RXTE Long Range

- MyDINO Telematics service integrated
- Operating within city centres, near housing, indoors
- Lightweight boom lift with outriggers
- Low operational cost and easy to transport
- AGM and Lithium battery powered versions available
- Low ground pressure, easy to move on soft surfaces
- Easy-entry basket, fully operational from the basket
- Great rough terrain access: oscillating front axle
- Excellent gradeability up to 40%
- 4WD/ 2WS/ 4WS/ Crab steering
- Fast to drive and setup: 10 km/h drive speed in transport position
- Automatic levelling up to 13,5°
- Up to 4 simultaneous boom movements
- Improved user experience, easy to operate, easy to maintain
- Superior boom performance, 8.2 m up-and-over and up to 16 m outreach
- Fly-jib 1.6m / 140°
- Extended AGM battery 580Ah

| Technical data | Metric | Imperial |
|-----------------------------|-----------------------------|--|
| Max. working height | 28.00 m | 91 ft 10 in |
| Max. platform height | 26.00 m | 85 ft 4 in |
| Max. outreach | 16.00 m | 52 ft 6 in |
| Support width | 4.6 / 4.2 m | 15 ft 1 in / 13 ft 9 in |
| Lifting capacity | 230 kg / 250 kg* | 507 lbs / 551 lbs* |
| Basket size | 0.7 x 1.3 m / 0.75 x 1.6 m* | 2 ft 4 in x 4 ft 3 in / 2 ft 6 in x 5 ft 3 in* |
| Boom rotation | continuous | continuous |
| Basket rotation | 180° | 180° |
| Boom control | CAN-BUS, proport. | CAN-BUS, proport. |
| Jib | 1.6 m / 140° | 5 ft 3 in / 140° |
| Transport length | 5.82 m | 19 ft 1 in |
| Transport width | 2.05 m | 81 in |
| Transport height | 2.37 m | 7 ft 9 in |
| Approach / departure angles | 33.4° | 33.4° |
| Ground clearance | 0.33 m | 1 ft 1 in |
| Four wheel drive | std | std |
| AC socket in the basket x 2 | std | std |
| Drive speed | 10.0 / 3.0 km/h | 6.2 / 1.7 mph |

*] optional

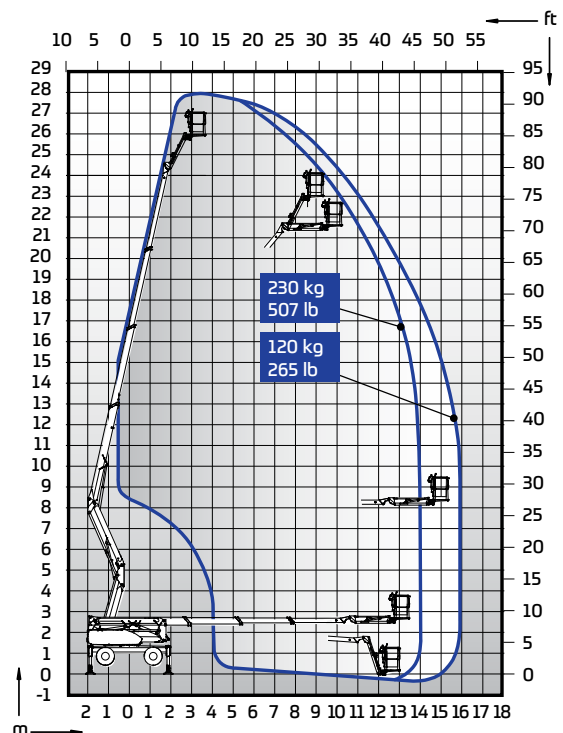
DINOLIFT

UP TO THE JOB



Options available for DINO 280RXTE Long Range

- Extra outrigger pads and brackets, 600 x 600 x 25 mm
- XL-basket 0.75 x 1.6 m with 250 kg lifting capacity
- One person basket 0.70 x 0.80 m
- DINO SafeGuard secondary guarding
- LED working lights, 2 x 13 W
- LED driving lights



| Technical data | 280RXTE Long Range |
|-----------------------|--------------------|
| Power source | AGM battery |
| Weight kg | 5400 |
| Weight lbs | 11904 |
| Power kW (cont./peak) | 15 / 20 kW |
| Battery capacity | 580 Ah |

Dinolift Oy | Raikkolantie 145 • FI-32210 LOIMAA, FINLAND

Tel: +358 (0)20 1772 400 • E-mail: info@dinolift.com

www.dinolift.com

Technical specifications are subject to change without prior notice.

©Dinolift Oy | 13.3.2025