

# Meet

## DINO 120TLB

### DINO® TRAILER MOUNTED MEWPs

#### Standard features in DINO 120TLB:

- MyDINO Telematics
- Driving system; easy to move at work site
- Ultra-light, total weight only 1263 kg
- 1-person steel basket, capacity 130 kg
- 2 x 12 V batteries 150 Ah

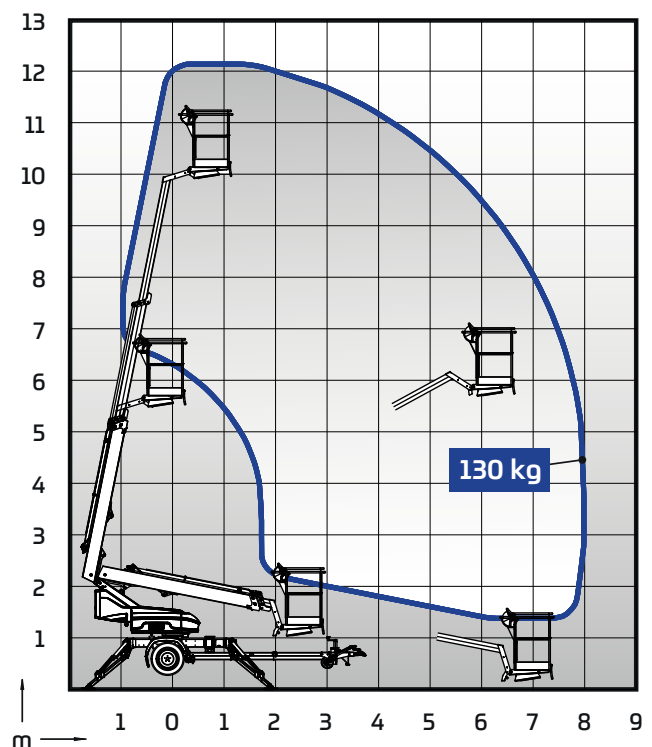


#### Options available for DINO 120TLB:

- Outrigger support indicator
- Extra outrigger pads 300 x 300 x 30 mm + bracket
- Lockable tool / harness box
- Special color
- Narrow axle (<100 cm) - Optimized for doorway clearance of 100x200cm

#### Technical data

|  | 120TLB         |
|--|----------------|
| Working height                                       | 12.0 m         |
| Platform height                                      | 10.0 m         |
| Maximum outreach (130 kg)                            | 8,1 m          |
| Lifting capacity                                     | 130 kg         |
| Boom rotation  | ±355°          |
| Support width  | 3,8 m          |
| Support length                                       | 3,8 m          |
| Basket size  | 0,75 x 0,8 m   |
| Transport width                                      | 1.53 m         |
| Transport height                                     | 2,03 m         |
| Transport length                                     | 5.3 m          |
| Weight   | 1263 kg        |
| Boom control   | 2-speed on/off |
| AC socket in the basket x 2                          | std            |
| Electric motor                                       | 2,0 kW 24 VDC  |
| Batteries 2 x 12 V / 150 Ah                          | standard       |
| Driving device, Controlled by manual hydraulic valve | standard       |
| Narrow axle width <100cm                             | optional       |



# DINOLIFT

UP TO THE JOB

Dinolift Oy | Raikkolantie 145 • FI-32210 LOIMAA, FINLAND

Tel: +358 (0)20 1772 400 • E-mail: info@dinolift.com

[www.dinolift.com](http://www.dinolift.com)

Technical specifications are subject to change without prior notice.

©Dinolift Oy | 24.3.2025