

Meet

DINO 120TLB

DINO® TRAILER MOUNTED MEWPs

Standard features in DINO 120TLB:

- MyDINO Telematics
- Driving system; easy to move at work site
- Ultra-light, total weight only 1263 kg
- 1-person steel basket, capacity 130 kg
- 2 x 12 V batteries 150 Ah

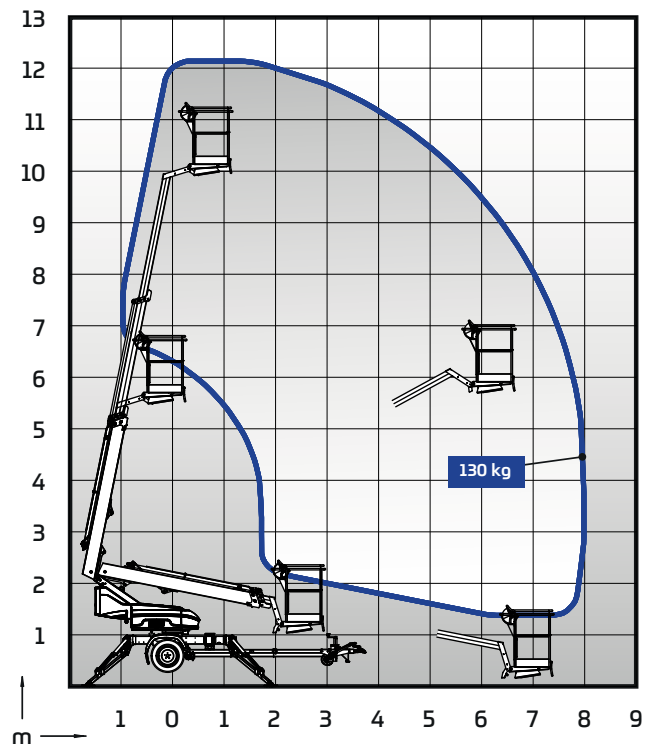


Options available for DINO 120TLB:

- Outrigger support indicator
- Extra outrigger pads 300 x 300 x 30 mm + bracket
- Lockable tool / harness box
- Special color

Technical data

| | 120TLB |
|--|----------------|
| Working height | 12.0 m |
| Platform height | 10.0 m |
| Maximum outreach (130 kg) | 8,1 m |
| Lifting capacity | 130 kg |
| Boom rotation | ±355° |
| Support width | 3,8 m |
| Support length | 3,8 m |
| Basket size | 0,75 x 0,8 m |
| Transport width | 1.53 m |
| Transport height | 2,03 m |
| Transport length | 5.3 m |
| Weight | 1263 kg |
| Boom control | 2-speed on/off |
| AC socket in the basket x 2 | std |
| Electric motor | 2,0 kW 24 VDC |
| Batteries 2 x 12 V / 150 Ah | standard |
| Driving device, Controlled by manual hydraulic valve | standard |
| Narrow axle width <100cm | optional |



DINOLIFT

UP TO THE JOB

Dinlift Oy | Raikkolantie 145 • FI-32210 LOIMAA, FINLAND

Tel: +358 (0)20 1772 400 • E-mail: info@dinolift.com

www.dinolift.com

Technical specifications are subject to change without prior notice.

©Dinlift Oy | 27.8.2024