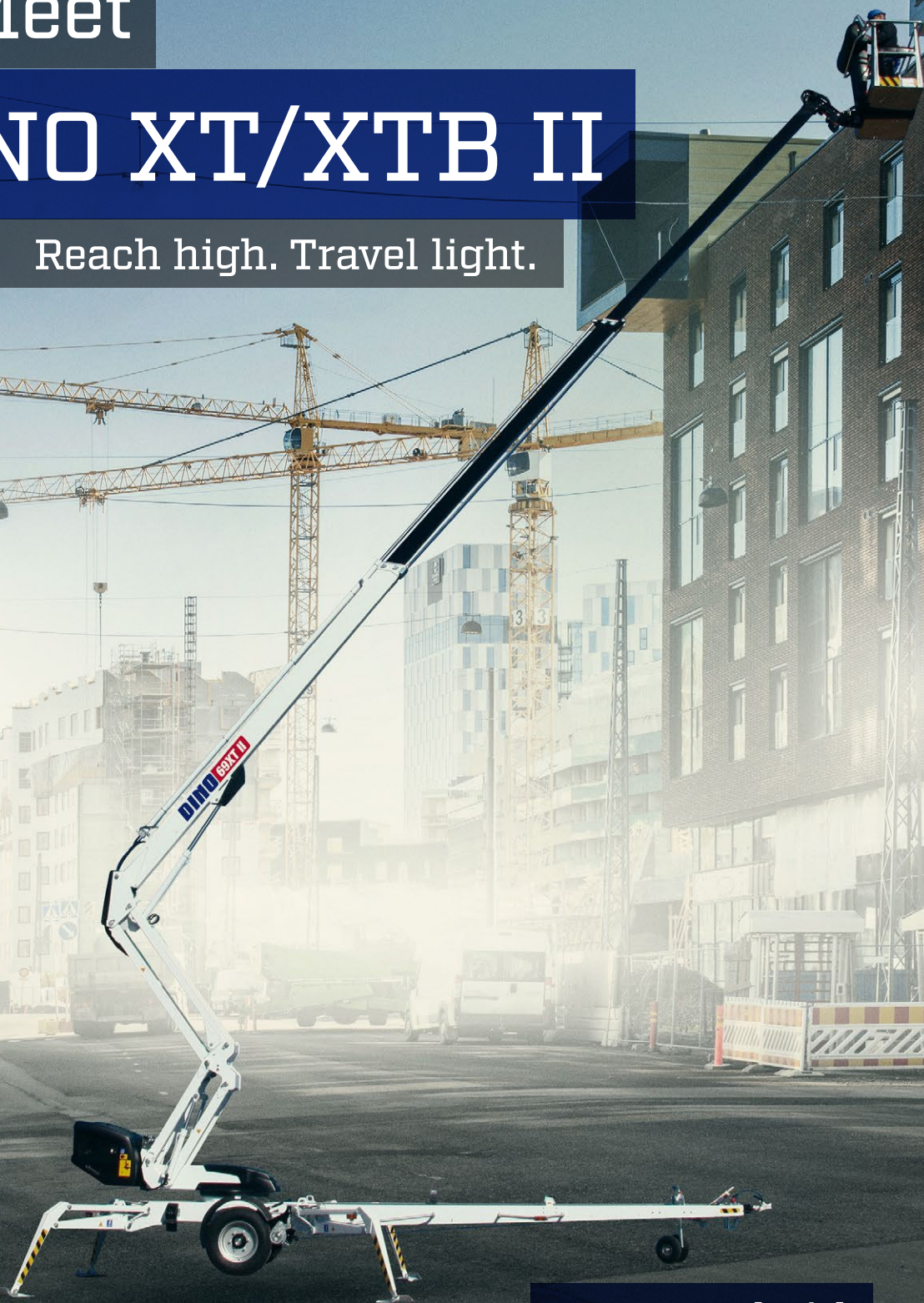


Meet

# DINO XT/XTB II

Reach high. Travel light.



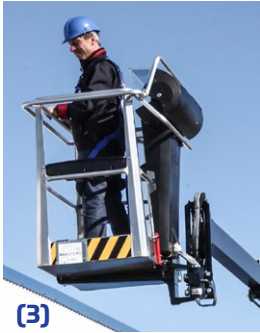
## 100% up to the job

- 85XTD - the highest towable lift available in North America
- Up and over arms, telescopic boom with large outreach
- Reliable and easy to use
- Decades of experience in the rental fleets

**DINOLIFT**  
UP TO THE JOB

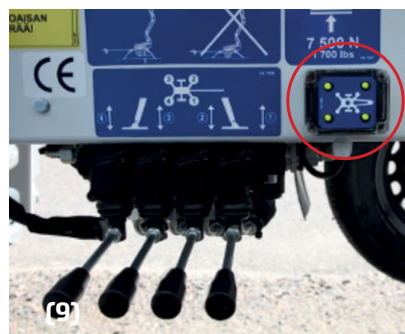
## Standard features in all DINO XT/B II models:

- Driving system; easy to move at work site **(1)**
- Cable remote steering for driving **(2)**
- Hydraulic basket rotation 180° \* **(3)**  
\*) except 90° electric on the 85XTD
- Spacious, easy-entry basket; capacity 475 lb **(4)**
- Spider type outriggers **(5)**
- Large outrigger pads 11 x 14 in
- Continuous rotation of the boom; easy and functional
- Petrol engine on XT II / XTD models
- Easy and fast setup; perfect solution for short time jobs
- Simple to use, clear and informative controls **(6-7)**
- Powerful charger; machine can be operated directly when charging the batteries. (69XTB II series)
- High-capacity batteries, 4 x 6VDC, 235Ah. Work one day with overnight charge. (69XTB II)



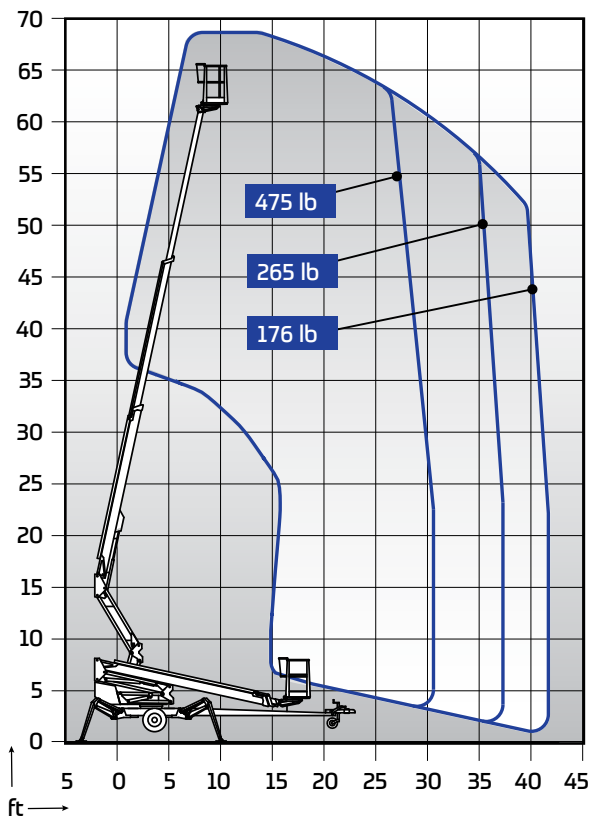
## Options for all DINO XT/B II models:

- Two joystick controls\* **(8)**  
\*) standard in 85XTD
- Outrigger support indicator **(9)**
- Diesel engine XT II / XTD models
- Automatic levelling\*  
\*) standard in 85XTD
- LED working lights
- Extra outrigger pads  
20 x 20 x 1.4 in + bracket
- Lockable tool / harness box **(10)**
- Rack for tools and accessories
- Spare wheel
- DINO SafeGuard secondary guarding
- 2kW Honda generator  
+ bracket for charging batteries  
where 110V is not available  
(69XTB II) **(11)**



# DINO 69XT/B II

- Spider outriggers; great levelling capability in slopy terrain

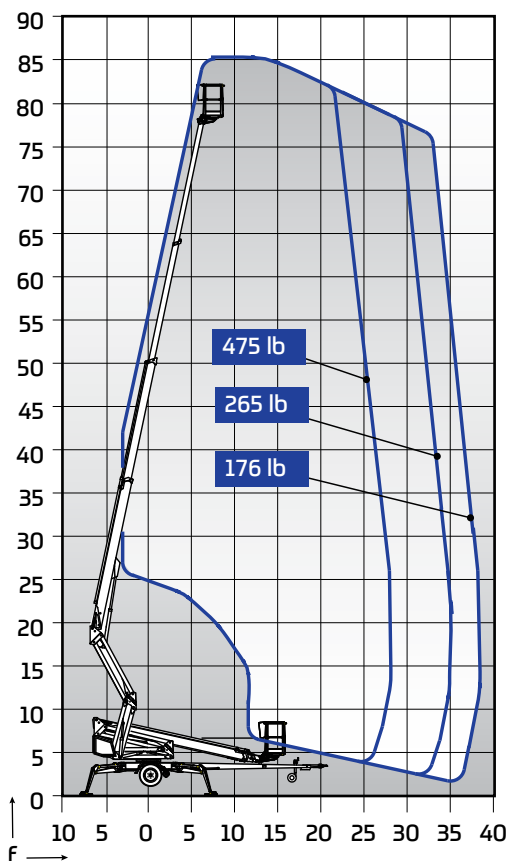


## Technical data

	69XT II	69XTB II
Max. working height	68 ft 10 in	68 ft 10 in
Max. platform height	62 ft 5 in	62 ft 5 in
Max. outreach	38 ft 5 in	38 ft 5 in
Support width	12 ft 10 in / 14 ft 1 in	12 ft 10 in / 14 ft 1 in
Lifting capacity	475 lb	475 lb
Basket size	2 ft 4 in / 4 ft 3 in	2 ft 4 in / 4 ft 3 in
Boom rotation	cont.	cont.
Basket rotation	180°	180°
Boom control	proport.	proport.
Transport length	25 ft 12 in	25 ft 12 in
Transport width	6 ft 5 in	6 ft 5 in
Transport height	7 ft 7 in	7 ft 7 in
Weight	5456 lb	5754 lb
Driving system	std	std
AC socket in the basket x 2	std	std
Petrol engine	std	-
Diesel engine	opt.	-
Batteries 235 Ah	-	std
DC Motor	-	std
Gradeability	25 %	25 %

# DINO 85XTD

- Driving, operation of outriggers and boom movements from the basket



## Technical data

	85XTD
Max. working height	85 ft 5 in
Max. platform height	78 ft 10 in
Max. outreach	38 ft 5 in
Support width	14 ft 5 in / 15 ft 11 in
Lifting capacity	475 lb
Basket size	2 ft 4 in / 4 ft 3 in
Boom rotation	cont.
Basket rotation	90°
Boom control	proport.
Transport length	26 ft 11 in
Transport width	6 ft 9 in
Transport height	8 ft
Weight	7705 lb
Driving system	std
AC socket in the basket x 2	std
Petrol engine	std
Diesel engine	opt.
Gradeability	25 %
Drive from the basket	std



Meet

# DINO XT/XTB II

Reach high. Travel light.

DINO aerial work platforms are known for their quality, reliability and safety. We design and build every DINO at our factory in Finland.

We take no shortcuts. We make no compromises. We make machines that help you work at height with maximum confidence. In all conditions. In all terrains.

Get in touch with us to build your own DINO.



**Rte.27 Raymond, NH**

For sales reach out to

devonp@raymondbucketguys.com / (603) 303-8364

Office: (603) 895-3803

317 Route 27, Raymond, NH 03077

# DINOLIFT

**UP TO THE JOB**

DINOLIFT Oy | Raikkolantie 145 • FI-32210 LOIMAA, FINLAND

Tel: +358 (0)20 1772 400 • E-mail: info@dinolift.com

[www.dinolift.com](http://www.dinolift.com)

Technical specifications are subject to change without prior notice.

©Dinolift Oy | 18.2.2023