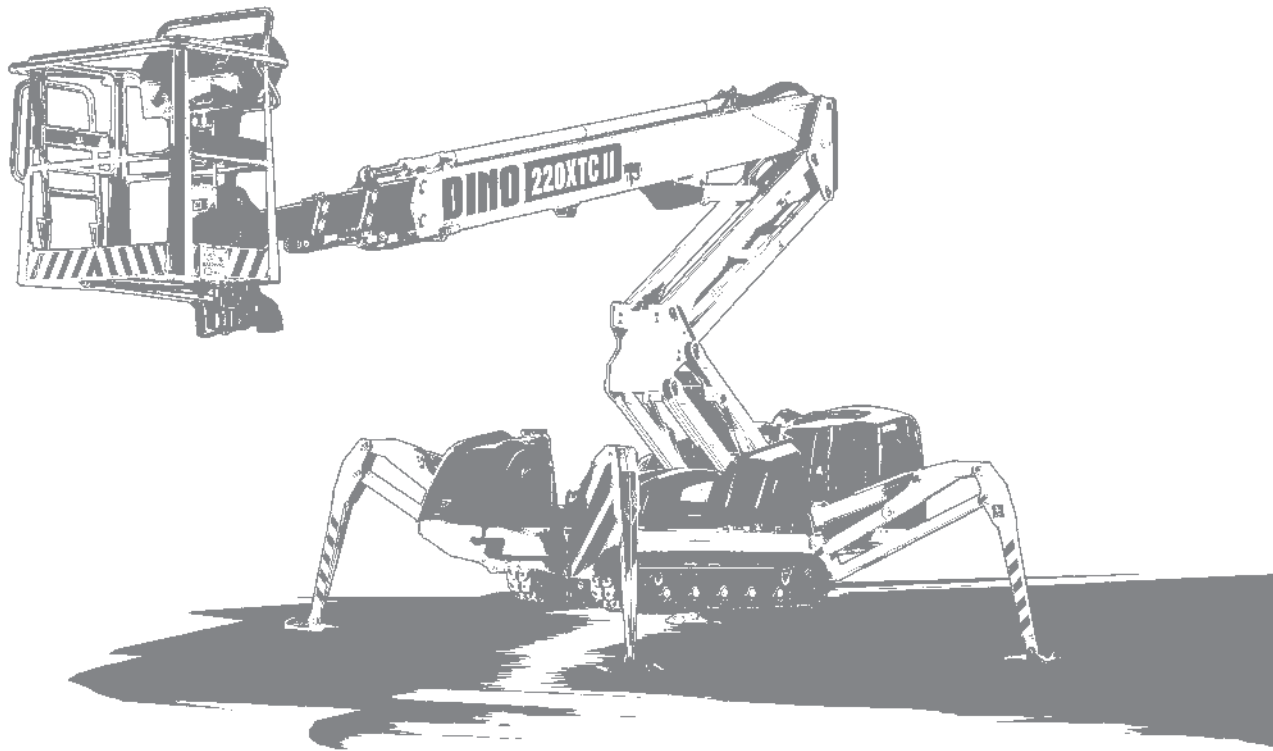


Options for

DINO lightweight

Mobile Elevating Work Platforms

**DINO Self propelled MEWPs /
DINO Spider / Crawler**



Valid for deliveries 1.1.-31.12.2022

DINO XTC II Series

DINOLift
UP TO THE JOB

STANDARD EQUIPMENT

STANDARD EQUIPMENT	185XTC II	220XTC II
Continuous rotation of the boom	std	std
Basket rotation	std 180°	std 180°
AC socket in the basket x 2	std	std
Proportional controls	std	std
USB power outlet in basket	std	std
Arctic kit (block heater, start battery charger)	std	std
Automatic chassis levelling	std	std

OPTIONS

Options for enhanced use

Radio control for driving and outriggers

- Radio-ohjaus ajolaitteelle ja tukijaloille
- Radiostyrning för drivning och stödbenen
- Funkfernsteuerung für Fahrtrieb

185XTC II	220XTC II
available	available



Non-marking tracks instead of std tracks

- Harmaat telat vakiotelojen sijaan
- Gråa larvband istället för std larvband
- Graue Raupenketten statt den Std Raupenketten

185XTC II	220XTC II
available	available



Electric motor 110 / 230 V

- Sähkömoottori 110 / 230 V
- Elmotor 110 / 230 V
- Elektromotor 110 / 230 V

185XTC II	220XTC II
available	available



Options for basket

LED working lights

- LED työvalot
- LED arbetsbelysning
- LED Arbeitslichter

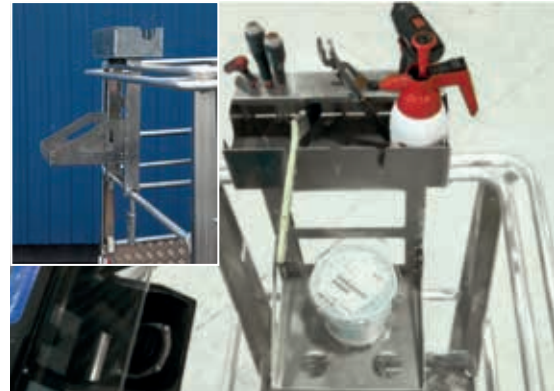
185XTC II	220XTC II
available	available



Rack for tools & accessories, removable

- Työkaluteline, irrotettava
- Verktygsställning, avtagbar
- Gestell für Werkzeuge, abnehmbar

185XTC II	220XTC II
available	available



12 V outlet in basket

- 12 V -liitäntä korissa
- 12 V -uttag i korgen
- 12 V -Ausgang im Korb

185XTC II	220XTC II
available	available



DINO Safe Guard, secondary guarding, including AV warning

- DINO Safe Guard puristumisenestosuojia AV-hälytyksellä
- DINO Safe Guard klämskydd med larmsignal
- DINO Safe Guard sekundäres Schutzsystem mit Alarmsignal

185XTC II	220XTC II
available	available



Anemometer

- Tuulimittari
- Vindmätare
- Windmesser



185XTC II	220XTC II
available	available

Basket load sensor

- Korikuormananturi
- Lastsensor på korgen
- Korblastsensor



185XTC II	220XTC II
available	available

Other options

GPS Telematics device*

- GPS seurantalaite*
- GPS lokalisator*
- GPS Lokalisierer*

* Contact us for alternatives



185XTC II	220XTC II
available	available

Thermometer / temperature limit switch

- Lämpötilarajakytkin
- Temperatur gränsbrytare
- Temperatur Endschalter

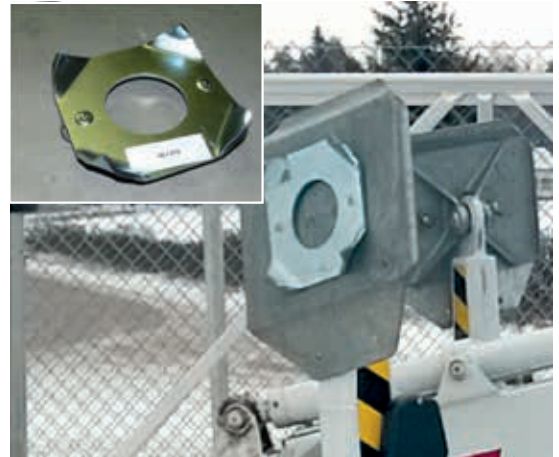


185XTC II	220XTC II
available	available

Spikes for outrigger pads

- Piikkilevyt tukijalkoihin
- Vinterplattor för stödbenen
- Winterstützen

185XTC II	220XTC II
available	available



LED flashing warning light

- LED vilkkuva varoitusvalo
- LED blinkande varningsljus
- LED Kennblitzleuchte

185XTC II	220XTC II
available	available



Special color (RAL color map)*

- Erikoisväri (RAL-värikartta)*
- Specialfärg (RAL-färgkarta)*
- Sonderfarbe (RAL-Farbpalette)*

* Contact us for details

185XTC II	220XTC II
available	available



Hydraulic oil cooler for hot environment

- Hydraulioiljyn jäähdytin kuumaan työskentely-ympäristöön
- Oljekylare för varm miljö
- Hydraulikölkühler für heiße Bedingungen

185XTC II	220XTC II
available	available

Trailer DT3500L purchased together with XTC II

Incl: ramps, chains, outriggers.

Material: Aluminum

- sis. rampit, sidontaketjut, tukijalat. Materiaali: alumiini
- inkl. ramp, fäststång. Material: aluminium
- inkl. Rampen, Ketten, Stützen. Material: Aluminum

185XTC II	220XTC II
available	available



DINO XTC II	185XTC II	220XTC II
STANDARD EQUIPMENT		
Continuous rotation of the boom	std	std
Basket rotation	std 180°	std 180°
AC socket in the basket x 2	std	std
Proportional controls	std	std
USB power outlet in basket	std	std
Arctic kit (block heater, start battery charger)	std	std
Automatic chassis levelling	std	std
OPTIONS		
Options for enhanced use		
Radio control for driving and outriggers	available	available
Non-marking tracks instead of std tracks	available	available
Electric motor 110 / 230 V	available	available
Options for basket		
LED working lights	available	available
Rack for tools & accessories, removable	available	available
12V outlet in basket	available	available
DINO Safe Guard, secondary guarding including AV warning	available	available
Anemometer	available	available
Basket load sensor	available	available
Other options		
GPS Telematics device	available	available
Thermometer/ Temperature limit switch	available	available
Spikes for outrigger plates	available	available
LED flashing warning light	available	available
Special colour (RAL color map)	available	available
Hydraulic oil cooler for hot environment	available	available
Trailer DT3500L purchased together with XTC II		
Incl: ramps, chains, outriggers. Material: Aluminum	available	available