

# Meet

# DINO 230VTH

## DINO 3,5t VEHICLE MOUNTED LIFT

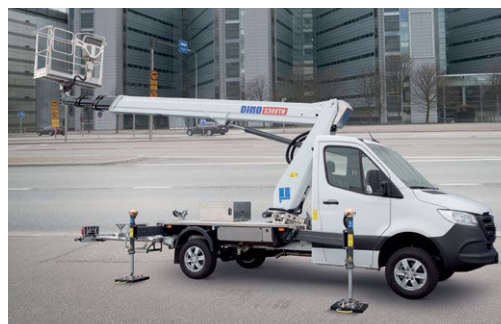
### Standard features in DINO 230VTH:

- Cost-efficient in use and easy to drive with a B-class driver's license
- 5 kWh / 105 Ah LiFePo battery capacity for 1h 40min continuous operation or typical 1 day in MEWP use
- Diesel engine to provide back up power running the conventional PTO driven hydraulic pump
- Plug-in charger 230 VAC / 16 A for 2h 20min charge cycle from empty to 100 % charge
- Charging the high voltage battery possible while driving with the 1 kW inverter
- 1 kW inverter also possible to use to power the 230 V sockets at the platform
- Li-Ion 12 V vehicle battery
- Three jacking options: narrow, wide and one-sided, automatic levelling
- Easy-entry basket with non-slip stairway

### Technical data

	230VTH
Max. working height	23.00 m
Max. platform height	21.00 m
Max. lateral outreach*	15.1 m / 100 kg 11.3 m / 230 kg
Lifting capacity	230 kg
Basket size	0.7 x 1.4 m
Boom rotation	±355°
Basket rotation	180°
Vehicle length*	7.75 m
Max. transport width*	2.43 m
Vehicle width*	2.26 m
Vehicle height*	2.96 m
Total vehicle weight*	3500kg*
Departure angle*	9°
Support width	
- longitudinal	3.9 m
- wide jacking	3.2 m
- narrow jacking	2.0 m
- one-sided jacking	2.6 m
Boom control	CAN-BUS, proportional
Automatic levelling	std
Home function	std
Memory function	std
Batteries	5 kW / 105 Ah / 48 V
Diesel or DC operation	std

\*) available with MB Sprinter Basic only

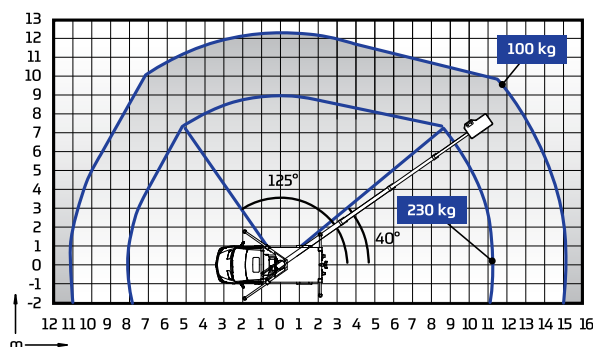
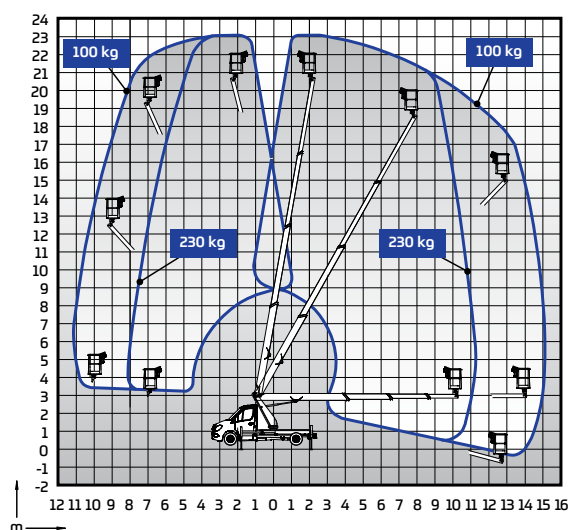


- Hydraulic basket rotation 180°
- Home and memory functions as standard features
- DINO CAN-BUS control system: intuitive controls
- Bumper and cabin protection, auto-detect boom position
- Smooth transitions within the working envelope: operator comfort
- Rental proof: well-protected components
- Remote start / stop from the basket
- LED markers on each outrigger cover
- Automatic variable load dependent engine RPM

### Options available for DINO 230VTH:

- Outrigger pads and brackets, 400 x 400 mm with a collar, including brackets for transport

### Outreach



Dinolift Oy | Raikkolantie 145 • FI-32210 LOIMAA, FINLAND

Tel: +358 (0)20 1772 400 • E-mail: info@dinolift.com

[www.dinolift.com](http://www.dinolift.com)

Technical specifications are subject to change without prior notice.

©Dinolift Oy | 9.9.2021

# DINOLIFT

UP TO THE JOB