

# Meet

# DINO 280RXT

DINO® Lightweight 4 x 4



## Standard features in DINO 280RXT:

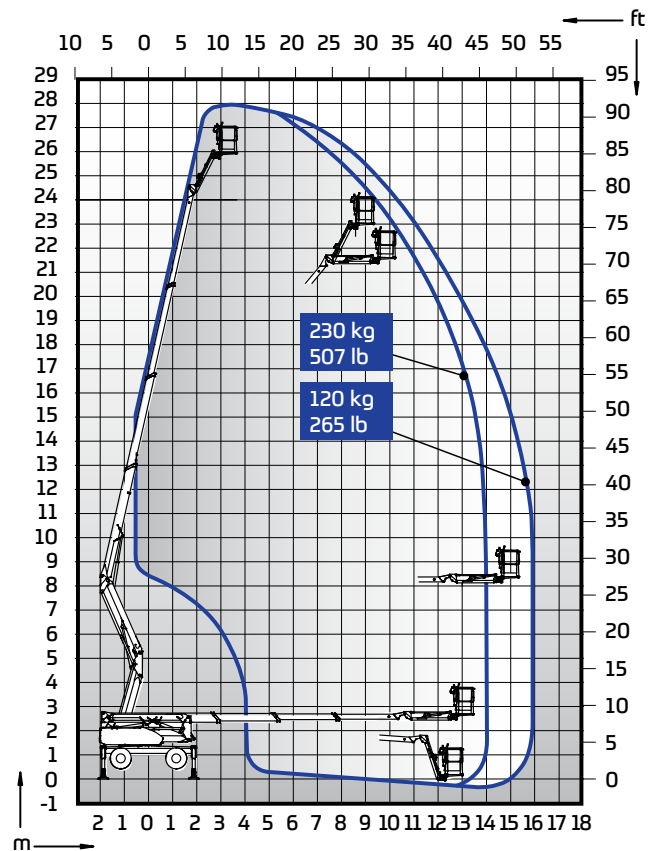
- MyDINO Telematics services including extended warranty
- Easy-entry basket, fully operational from the basket
- Great rough terrain access: oscillating front axle
- Strong engine, excellent gradeability up to 40 %
- 4WD/ 2WS/ 4WS/ Crab steering
- Fast to drive and setup: 10 km/h drive speed in transport position
- Automatic levelling up to 13.5°
- Up to 4 simultaneous boom movements
- Improved user experience, easy to operate and maintain
- Superior boom performance, 8.2 m up-and-over and up to 16 m outreach
- Fly-jib 1.6 m / 140°
- Air / water line to the basket (max 200bar, 93°C)

## Options available for DINO 280RXT:

- Electric motor for boom movements
- Hydraulic generator 3.5 kW
- Different tyre configurations
- Air compressor
- Extra outrigger pads and brackets, 600 x 600 x 25 mm
- 2-person XL-basket (0,75 x 1,6 m), SWL 250kg, incl. basket load sensor
- One person basket 0.70 x 0.80 m
- DINO SafeGuard secondary guarding
- LED working lights, 2 x 13 W
- LED driving lights
- LED beacons on each outrigger

## Technical data

	Metric	Imperial
Max. working height	28.00 m	91 ft 10 in
Max. platform height	26.00 m	85 ft 4 in
Max. outreach	16.00 m	52 ft 6 in
Support width	4.6 / 4.2 m	15 ft 1 in / 13 ft 9 in
Lifting capacity	230 kg	507 lbs
Basket size	0.7 x 1.3 m	2 ft 4 in x 4 ft 3 in
Boom rotation	continuous	continuous
Basket rotation	180°	180°
Boom control	CAN-BUS, proport.	CAN-BUS, proport.
Jib	1.6 m / 140°	5 ft 3 in / 140°
Transport length	5.82 m	19 ft 1 in
Transport width	2.05 m	81 in
Transport height	2.37 m	7 ft 9 in
Weight	4860 kg	10715 lbs
Approach / departure angles	33.4°	33.4°
Ground clearance	0.33 m	1 ft 1 in
Four wheel drive	std	std
Steering, 2WS / 4WS / Crab	std	std
AC socket in the basket x 2	std	std
Diesel engine Kubota 18.5 kW	std	std
Electric motor 110/230 VAC	option	option
Automatic levelling	std	std
Gradeability	40 %	40 %
Drive speed	10.0 / 3.0 km/h	6.2 / 1.7 mph



# DINOLIFT

UP TO THE JOB

Dinolift Oy | Raikkolantie 145 • FI-32210 LOIMAA, FINLAND

Tel: +358 (0)20 1772 400 • E-mail: info@dinolift.com

[www.dinolift.com](http://www.dinolift.com)

Technical specifications are subject to change without prior notice.

©Dinolift Oy | 22.11.23