

Meet

DINO 210XT II

DINO® TRAILER MOUNTED MEWPs

Standard features in DINO 210XT II:

- Spider outriggers; great levelling capability in slopy terrain
- Two power sources as standard, 230 VAC and petrol engine (diesel as option)
- Driving system; easy to move at work site with cable steering
- Hydraulic basket rotation 180°
- Spacious, easy-entry basket; capacity 215 kg
- Large outrigger pads 280 x 360 mm
- Continuous rotation of the boom; easy and functional
- Stable to tow
- Simple to use, clear and informative controls

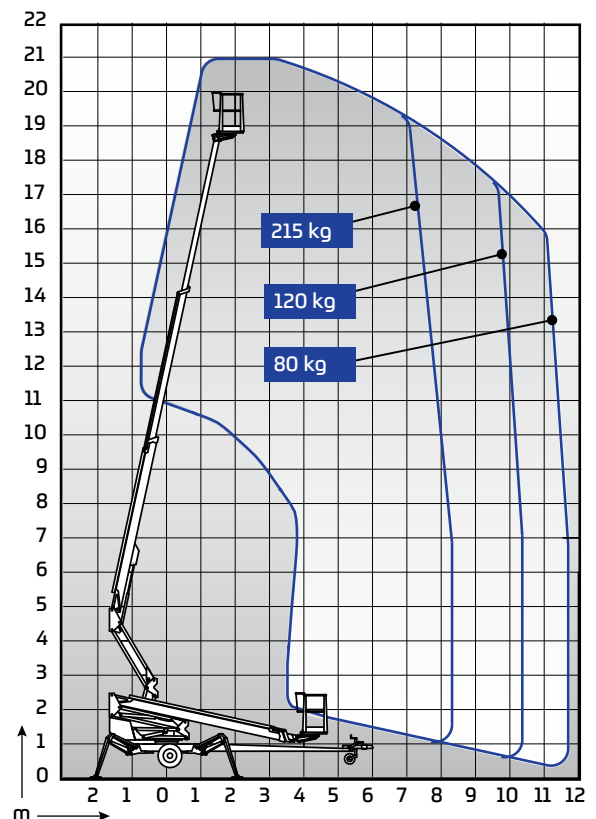
Technical data

	210XT II
Max. working height	21.00 m
Max. platform height	19.00 m
Max. outreach	11.70 m
Support width	3.9 / 4.3 m
Lifting capacity	215 kg
Basket size	0.7 x 1.3 m
Boom rotation	cont.
Basket rotation	180 °
Boom control	proport.
Transport length	7.92 m
Transport width	1.95 m
Transport height	2.33 m
Weight	2475 kg
Driving system	std
AC socket in the basket x 2	std
Electric motor 110/230 VAC	std
Petrol power engine	std
Diesel power engine	opt.
Gradeability	25 %



Options available for DINO 210XT II:

- Diesel power engine
- Two joystick controls
- Outrigger support indicator
- Automatic levelling
- LED working lights
- Extra outrigger pads 500 x 500 x 35 mm + bracket
- Lockable tool / harness box
- Rack for tools and accessories
- DINO SafeGuard secondary guarding
- Spare wheel
- DINO SkyRack – plate & tube rack max loading 100 kg, 3 m²



DINOLIFT

UP TO THE JOB

Dinolift Oy | Raikkolantie 145 • FI-32210 LOIMAA, FINLAND

Tel: +358 (0)20 1772 400 • E-mail: info@dinolift.com

www.dinolift.com

Technical specifications are subject to change without prior notice.

©Dinolift Oy | 25.10.2023